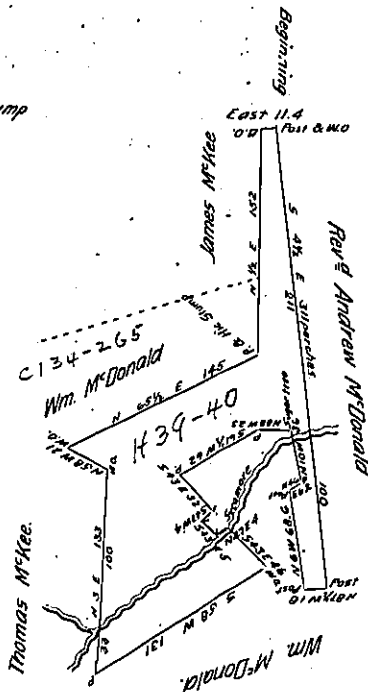


H39-38  
and  
H39-40

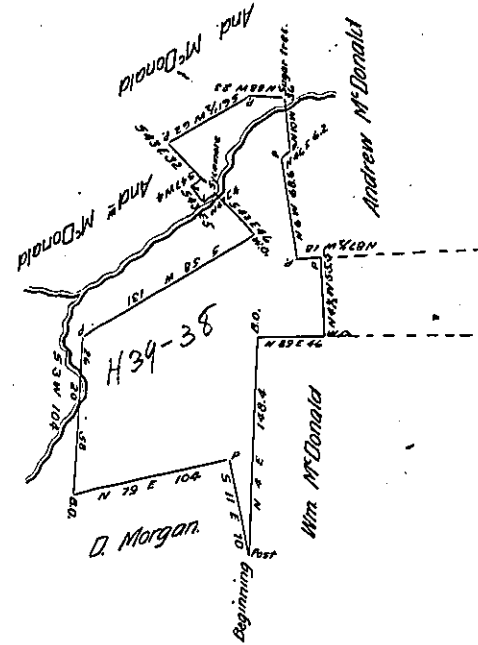
Notes  
 Post & W.O. S 4 1/2 E 311 post  
 N 87 1/2 W 18 post  
 N 6 W 68.6 post & R.O. Stump  
 W 46 E 6.2 P  
 N 10 W 36 Sugar tree  
 N 88 W 23 P  
 S 61 1/2 W 62  
 S 43 E 32  
 S 47 W 4  
 S 43 E 5  
 N 47 E 4 Sycamore  
 S 43 E 46 W.O.  
 S 58 W 131  
 N 3 E 133 W.O.  
 N 58 W 21 W.O.  
 N 65 1/2 E 145 P & Hic Stump  
 N 1/2 E 152 B.O.  
 East 11.4 P & W.O.

107 acres 134 perches & allowance



Field Notes  
 Post N 4 E 148.4 B.O.  
 N 89 E 46 W.O.  
 N 4 1/2 W 55.5  
 N 87 1/2 W 18  
 N 6 W 68.6 Post & B.O. Stump  
 N 46 E 6.2  
 N 10 W 36 Sugar tree  
 N 88 W 23  
 S 61 1/2 W 62  
 S 43 E 32  
 S 47 W 4  
 S 43 E 5  
 N 47 E 4 Sycamore.  
 S 43 E 46 W.O.  
 S 58 W 131  
 S 3 W 104 B.O.  
 N 79 E 104  
 S 11 E 70 Post Beginning

140 acres 19 perches & allowance.



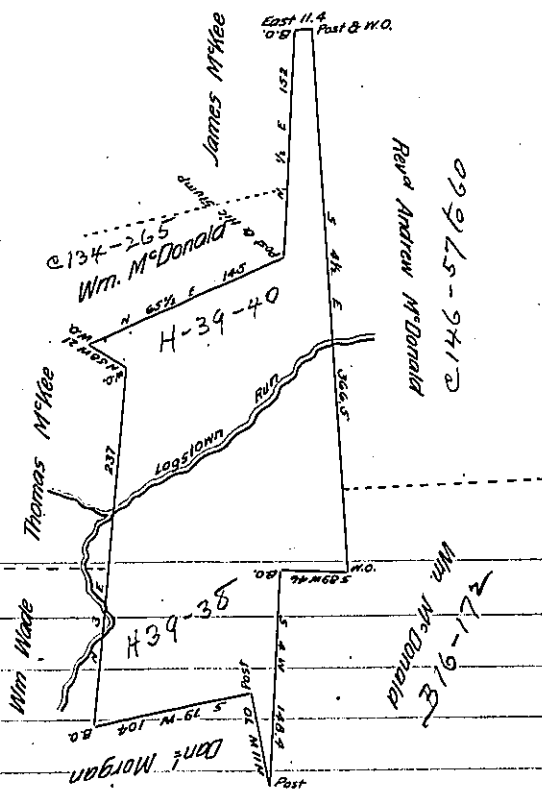
Surveyed the above described land for Andrew McDonald - Improved land - It being a tract of land called Shane, and Blunk's situate in Hopewell Township, adjoining other lands of the said Andrew McDonald on the east - On the South for twelve lines adjoining Wm. McDonald - and on the west by Wm. McDonald and James McKee - The twelve lines on the south end, are the division lines between the aforesaid McDonalds as adjusted by referees &c.

Containing one hundred and seven acres, one hundred and thirty four perches, and allowance of six per cent for roads &c. the 21<sup>st</sup> day of January 1836. - Copied and Returned March 11<sup>th</sup> A. D. 1836.

(Signed) John Martin D.S.

The above Draught represents a survey made for Wm. McDonald of Hopewell Township, it being a part of a tract of land known by the name of Shane and Blunk's, situate in Hopewell Township on the waters of Logstown Run - Adjoining other lands of said McDonald on the east, Andrew McDonald on the north, by twelve lines, being the division lines between said McDonalds as adjusted by referees - On the west by land of Wm Wade on the south by D Morgan - the same being improved land, including one hundred and forty acres, nineteen perches, with the usual allowance of six per cent for roads &c. - 9<sup>th</sup> day of January 1836. March 11<sup>th</sup> 1836. Returned a copy of Draught and Certificate for to obtain Patent

ON HOPEWELL BEAVER



Bridgewater February 1<sup>st</sup> 1838.

I certify that the two Draughts above, together with their statements are true copies of entries remaining on the County Book now in my office.

A Warrant has been granted to William McDonald dated January 24<sup>th</sup> 1838 for 248 acres which was intended to embrace both pieces.

I have therefor at the request of the Warrant holder connected the two Draughts together as above and believing the surveys to have been correctly made I approve of them, and take the liberty of returning the said tract as connected - in pursuance of the aforesaid Warrant, which said tract is situate in Hopewell Township Beaver County Pa. adjoining lands as above - Containing Two hundred and forty seven acres, one hundred and fifty three perches, and allowance of six per cent.

John Taylor Esq

Wm. McCallister D.S.

Surveyor General.

IN TESTIMONY that the above is a copy of the original remaining on file in the Department of Internal Affairs of Pennsylvania, made conformably to an Act of Assembly approved the 16th day of February, 1833, I have hereunto set my Hand and caused the Seal of said Department to be affixed at Harrisburg, this

second day of May 1906.

Secretary of Internal Affairs.